



Alliance of Universities in Europe

European Universities Linking Society and Technology

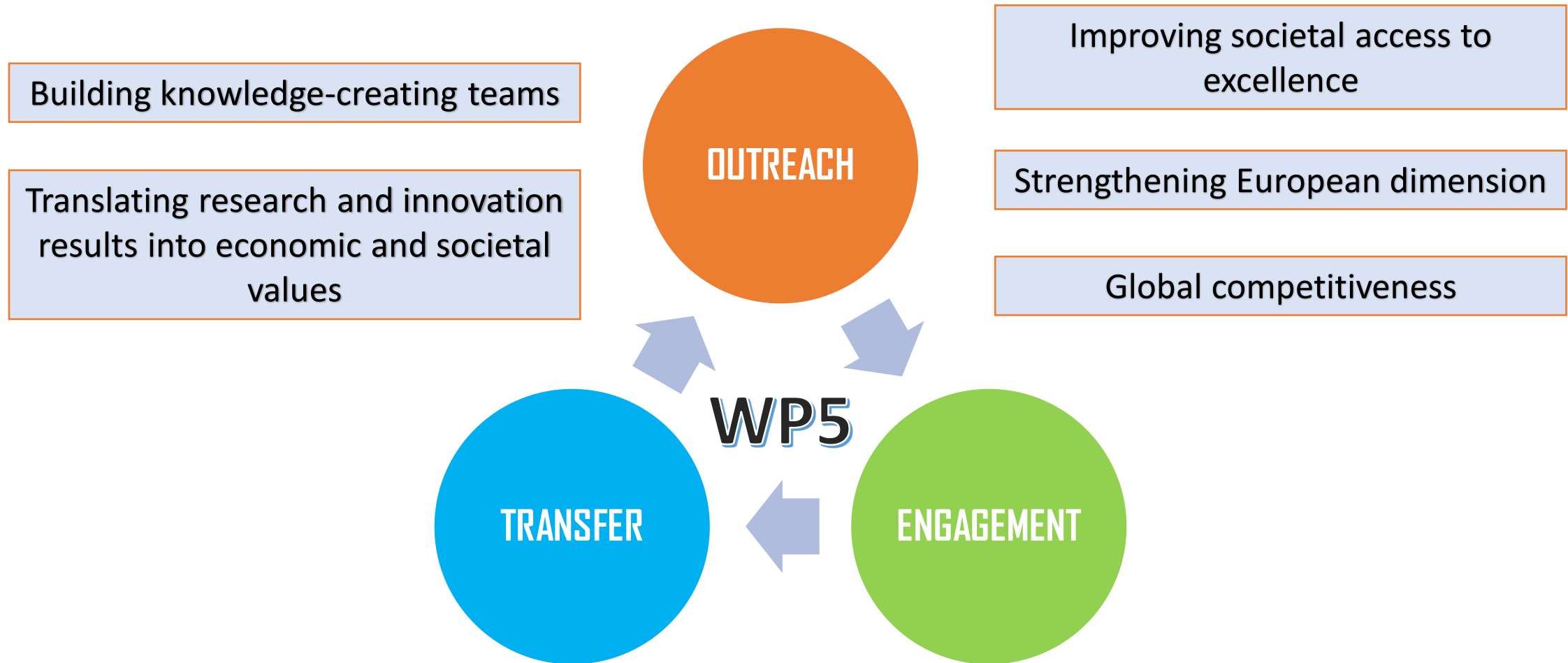
EULiST Outreach

Antonia Lampropoulou, EULiST NTUA Local Coordinator

NTUA within the EULiST European Community – 19/12/2023

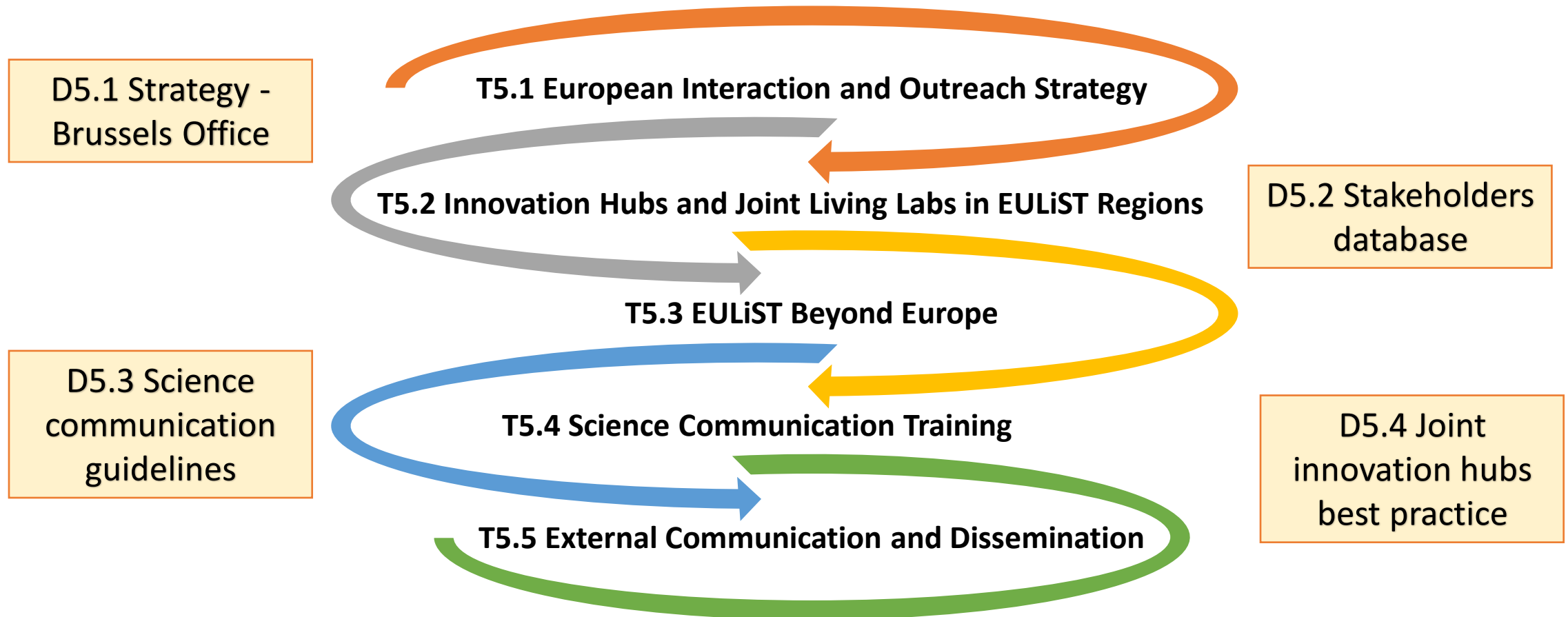


Linking Society and Technology



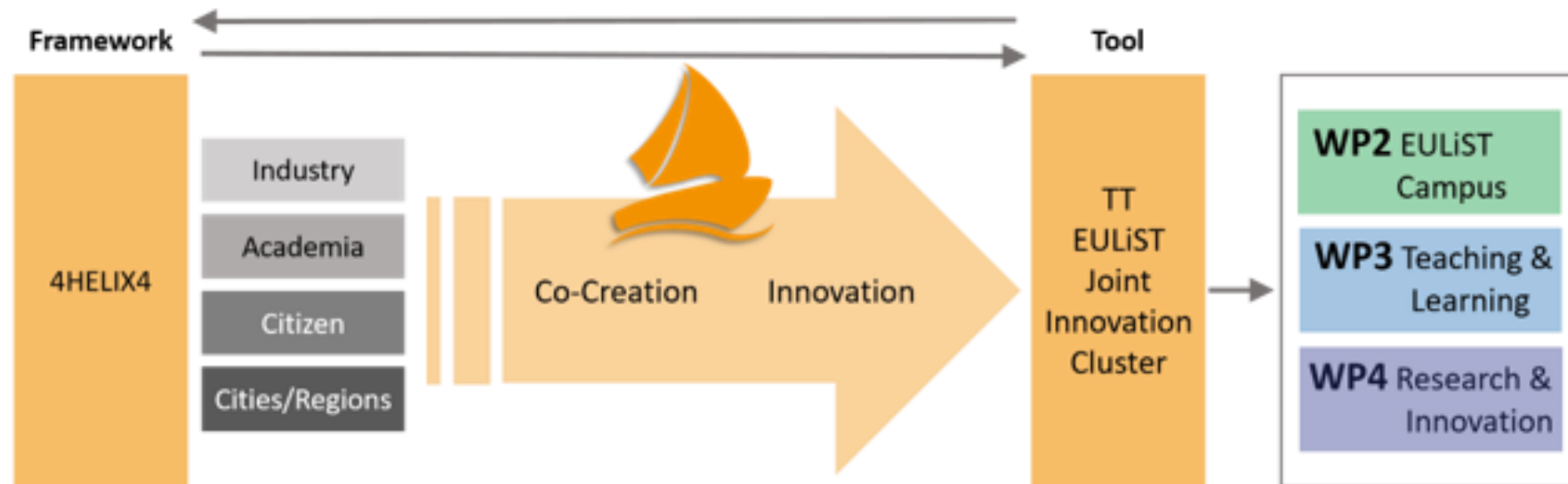


WP5 Tasks





WP5 Flagship: EULiST Co-Creation Cluster

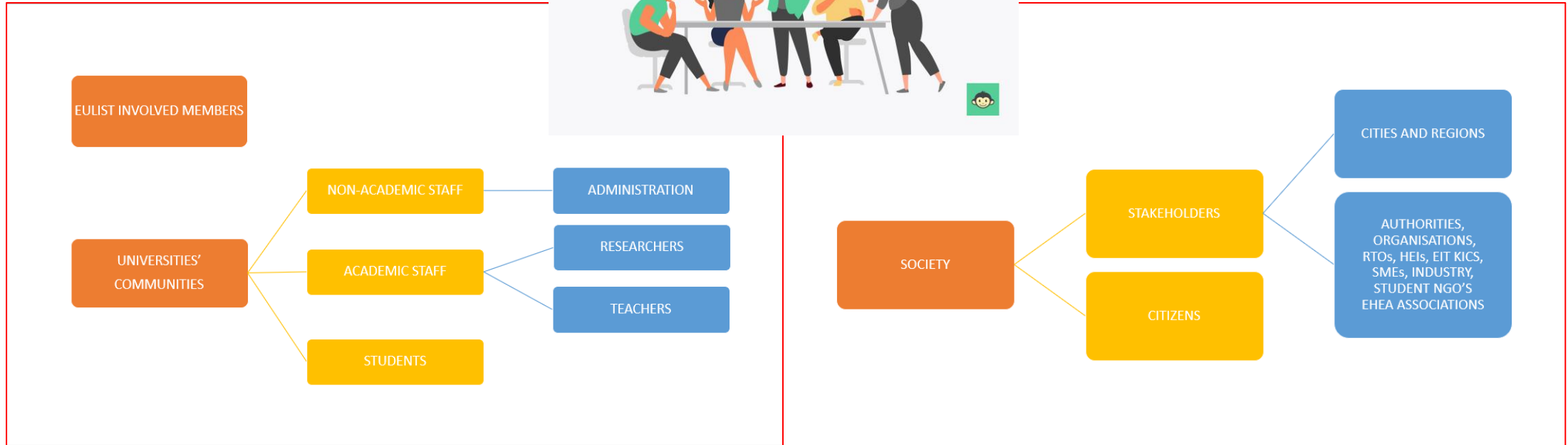


Quadruple Helix Model of Innovation

Science, Policy, Industry, Society



Engagement



Internal

External





Outreach

- Outreach is the voice and arms of EULiST in establishing **societal trust in technology**.
- EULiST Outreach will complete the **knowledge square**: teaching, research, scientific innovation and interaction with society.
- The overarching task is therefore to design and enact the **EULiST European Interaction and Outreach Strategy**, including distinct strategies for the provision of **science-based policy advice** for decision-makers and the wider public to rebuild the trust of society in technology and science.





Transfer

- **Local Innovation Hubs**
- **Local Open Labs**
- **Local Joint Living Labs**

*Places that help students' critical thinking, creative and entrepreneurial skills by having them **work on complex societal challenges** together across disciplines and countries, and alongside academics, researchers, entrepreneurs, companies, cities and regions.*

*This **intersectoral and challenge-based approach** is key to provide future generations with the **knowledge, skills and attitudes** that are relevant in a context of quickly evolving labour market needs, as well as profound structural changes in markets and technologies.*

EULiST Knowledge Hub
Open data

EULiST Agora
Lifelong learning

EULiST ERIA
Research to business





Task 5.3 Beyond Europe



Mapping of strategic University partners beyond Europe of EULiST Members

Existing partnerships

Aspects of strategic partnerships

- student exchange
- academic environment
- research collaboration

Strategic partners criteria

Survey for 10-15 strategic partners



Strategic Universities partners criteria

- Partner portfolio for all existing MoUs
- Excellence or development collaboration aspect
- The standing and reputation of the partner university – Excellence
- Activity within existing cooperation - Match between agreement and practice
- 5-year balance in exchange - Exchange potential
- Student performance
- Membership in joint or different networks
- Political issues – Universities sanctioned by other countries
- Geographical area
- Ability to collaborate - Output in relation to effort
- High volume of courses in English
- New types of opportunities and formats
- Ethics, safety and security
- Compliance with UN SDG5 gender equality



Global South

Step 1

- Task leads meeting during Madrid Staff week – discussion with Global South stakeholders regarding the SDGs

Step 2

- Global South University case studies – to seek EULiST aspects of cooperation promoting common **European values** and working within different European and **global cultures** in different languages, and across borders, sectors and academic disciplines in order to **tackle grand challenges** through a **science-based knowledge Co-Creation Culture**

Step 3

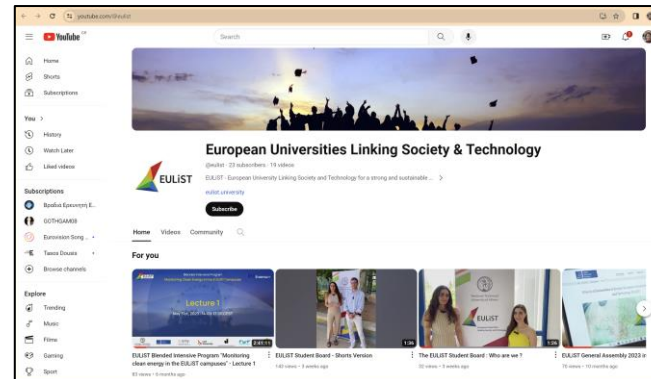
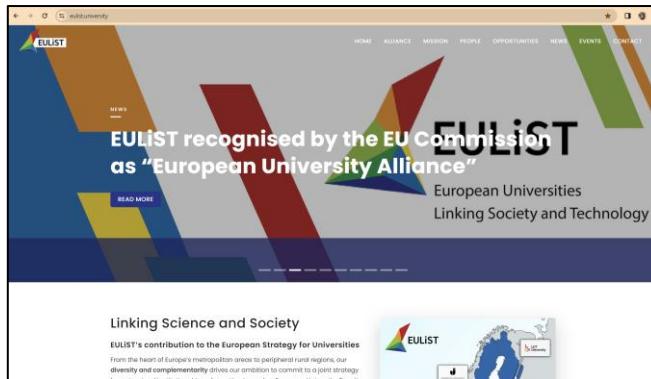
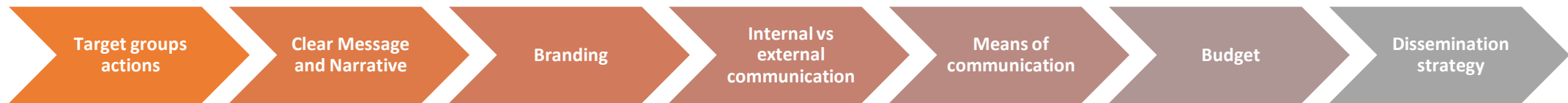
- Round Table Discussions – Pre/during EULIST conference
Enhancing HEIs' roles as knowledge hubs



Communication - Dissemination

Joint PR Unit | Coordination Office | Task 5.5

Main Actions



Origin of the logo

Based on our motto “European Universities Linking Society and Technology”, our logo comprises the locations of the involved universities.

Font

The logo font is “Source Sans Pro Semibold” and is set in black capital letters.

1) The space between the font and the graphic art is 1E.
2) In order to ensure legibility on multicoloured or distracting backgrounds, the logo lettering is set on a white background.

Colours

■ CMYK: 15-100-90-10	■ RGB: 190-22-34
■ CMYK: 0-50-100-0	■ RGB: 243-146-0
■ CMYK: 50-0-100-0	■ RGB: 149-193-31
■ CMYK: 85-10-100-0	■ RGB: 0-152-58
■ CMYK: 100-90-0-0	■ RGB: 39-52-139
■ CMYK: 85-50-0-0	■ RGB: 29-113-184
■ CMYK: 0-10-95-0	■ RGB: 255-222-0
■ CMYK: 90-90-95-45	■ RGB: 0-87-43



EULIST NTUA Events

